



1601 5TH AVENUE · SEATTLE, WASHINGTON

# WESTLAKE TOWER

[WESTLAKETOWERSEA.COM](http://WESTLAKETOWERSEA.COM)



# THE GATEWAY TO ALL OF SEATTLE

Uniquely positioned at the very epicenter of Seattle's Central Business District, Westlake Tower boasts unparalleled access to mass transit, unrivaled retail amenities, and protected lake, bay and cityscape views.



Class A,  
365k+ SF &  
25 stories



17K SF  
flexible  
floor plates



Great setbacks  
allowing for more  
natural light



Unique  
cityscape  
views

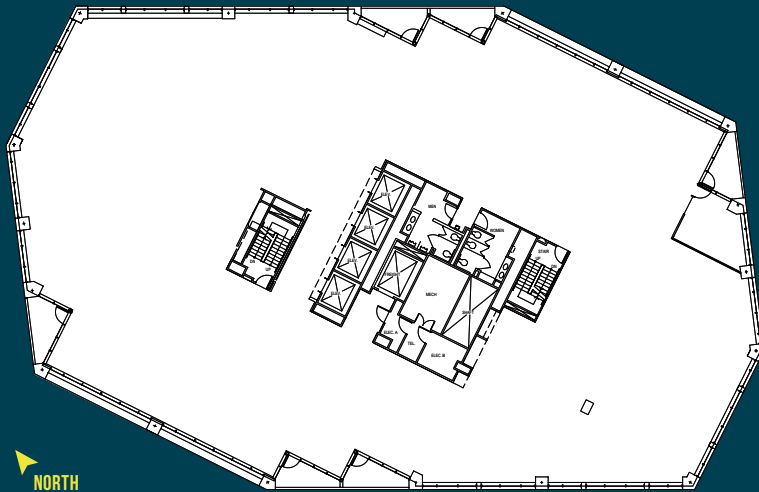


Direct access  
to Westlake  
Station



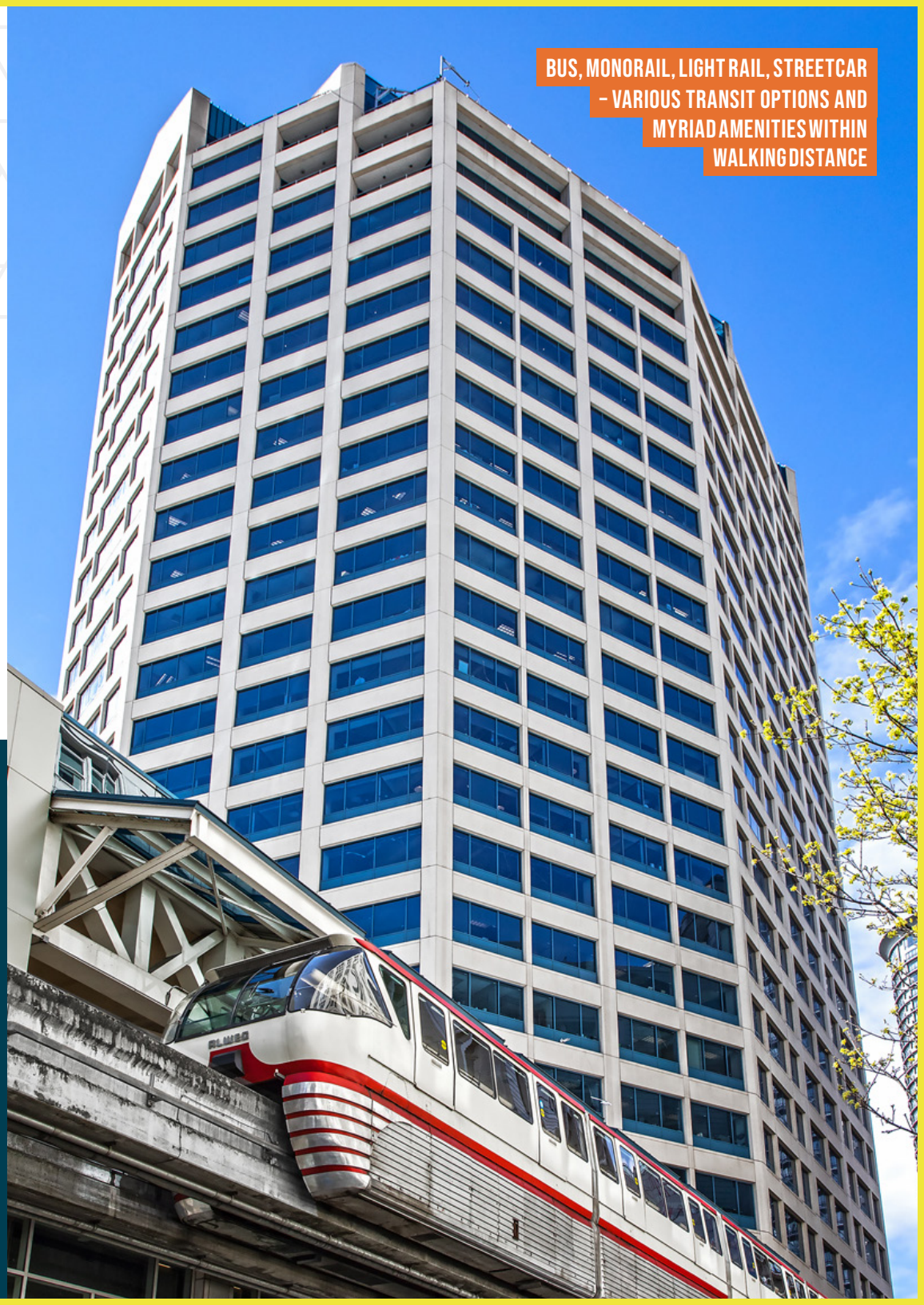
On-site  
property  
management

## REPRESENTATIVE FLOOR PLAN ±17,000 SF



NORTH


BUS, MONORAIL, LIGHT RAIL, STREETCAR  
- VARIOUS TRANSIT OPTIONS AND  
MYRIAD AMENITIES WITHIN  
WALKING DISTANCE





 **ABUNDANT  
NATURAL LIGHT**



**CONFERENCE  
CENTER** 

THE FRAMEWORK TO MAKE  
**A LASTING  
IMPRESSION**

Westlake Tower offers incredible sweeping views of the city; a bright, open lobby and amenities that offer convenience.



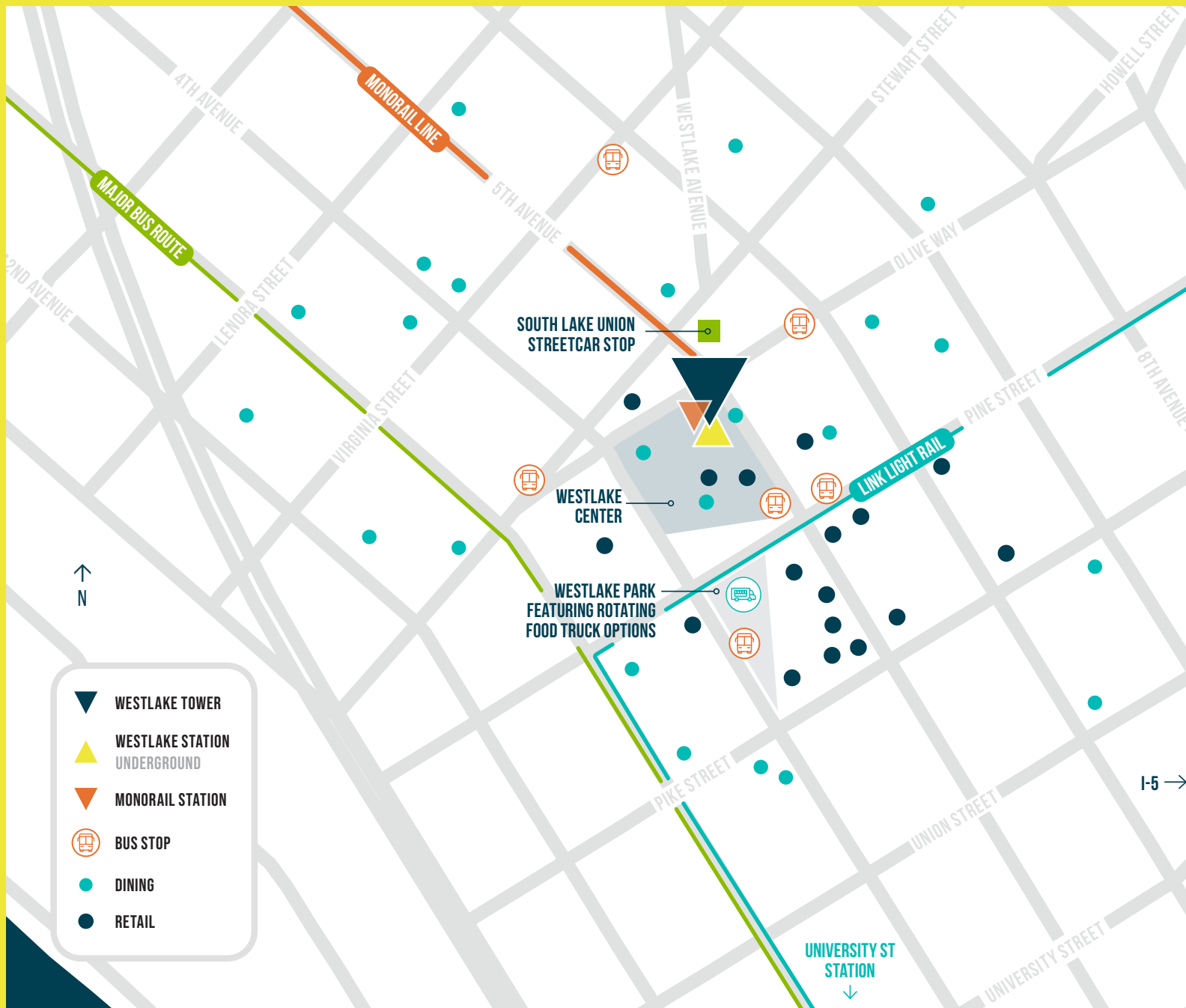
**LOCKER ROOMS  
& SHOWERS** 



 **ARMISTICE COFFEE  
ON-SITE**



**FULL SERVICE  
GYM** 



# ALL ACCESS

Get ready for the most convenient commute in Seattle – every mode of transportation is steps away from the front door. Plus, enjoy easy access to downtown, South Lake Union, and Belltown amenities.

**100**  
TRANSIT SCORE

**1/1,500**  
RSF PARKING

**99**  
WALK SCORE

**SECURE**  
BIKE STORAGE

[CLICK TO VIEW AVAILABILITIES](#)

LEASING: **JLL**

**LLOYD LOW**  
+1 206 607 1796  
lloyd.low@jll.com

**JOE GOWAN**  
+1 206 607 1738  
joe.gowan@jll.com

OWNED & MANAGED BY:  
**UNICO**

WESTLAKE TOWER · 1601 5TH AVENUE · SEATTLE, WA 98101 · WESTLAKETOWERSEA.COM

© 2024 Jones Lang LaSalle IP, Inc. All rights reserved. All information contained herein is from sources deemed reliable; however, no representation or warranty is made to the accuracy thereof. Jones Lang LaSalle